

New Hanover Regional Medical Center STEMI Program- EMS

David Glendenning, EMT-P
Field Training/Education
New Hanover EMS

How Does EMS Help Get One Of These?



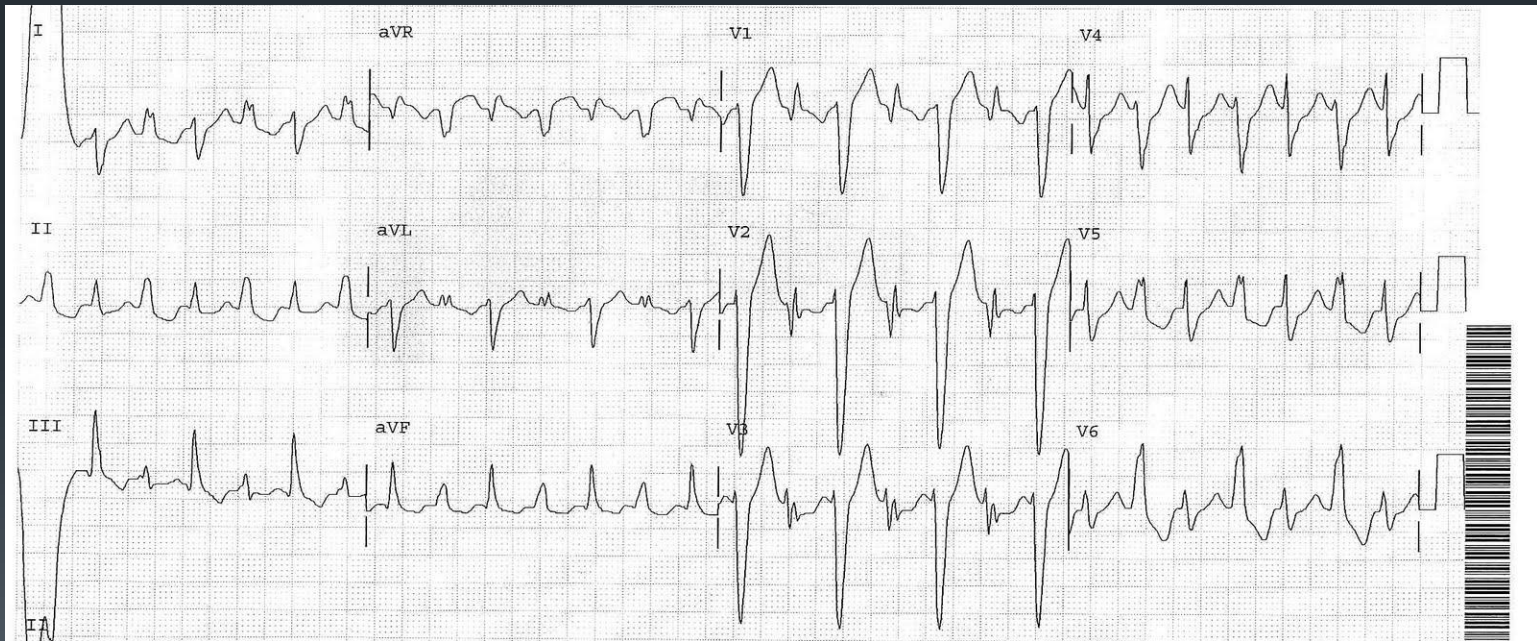
We Get Them When They Are Young!

Work closely with our local college
Training starts as early as EMT
class

Work with paramedic class during
cardiology



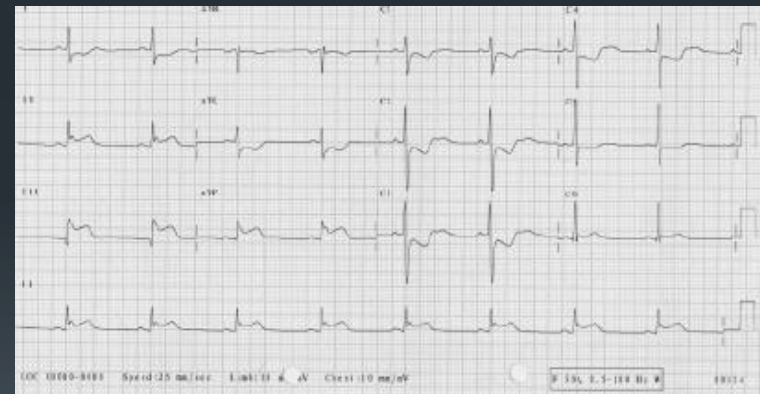
We Don't Start Here



We Start Here



We Arrive Here



New Hire Academy

Day of training devoted to assessing 12-Lead interpretation skills

Introduction to process and protocols

Meet with Acute MI & Stroke Manager, Coordinator, and walk through tour of cath lab




What About Existing Staff?



Practice Practice Practice

- Initial widespread
- Continuous twice a year continuing education platforms





Do or do not?

Transmission



Which Is Better?

\$\$\$\$\$\$\$\$\$\$\$\$\$\$\$\$



\$\$\$



Weekly STEMI Case Review





Weekly STEMI Case Review

- Dedicated place at the weekly review table
 - Always try to have at least an EMS training officer present
- Share all of the data with our crews
- Share unique teachable cases with our service
- Help be the voice for other EMS agencies as to why there may have been delays or thought processes
- **WORK CLOSELY WITH YOUR STEMI TEAM!**
 - Multi-disciplinary team including cath lab, ER, and leadership

Code STEMI Feedback Direct Presenters by EMS

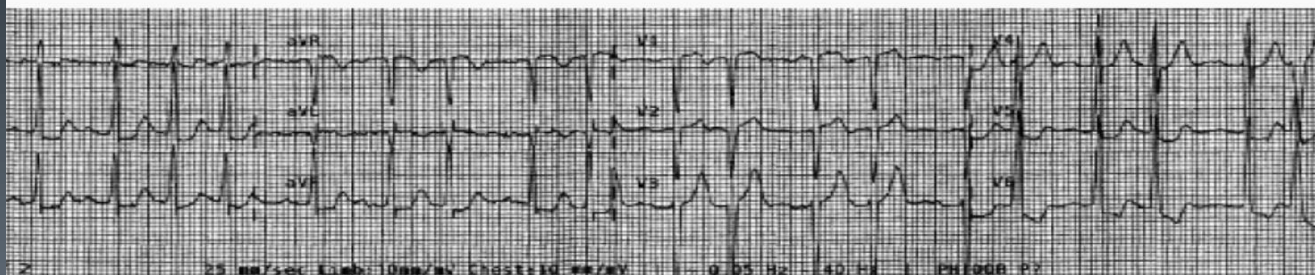
Date of Service: October 30
Time Code STEMI Page Received: 0719
EMS Agency: NHREMS
Paramedics: Sparks, Dickins
ED Physician: Incatasciato
ED Staff: Bostic
Cardiologist: Wiegman
Cath Lab Staff: N/A

30-30-30 Goal

		Recommended Targets (mins)	Actual Data
30 Mins EMS	EMS On-scene	< 10	11
	EMS Total Time		33
30 Mins ED	ED Door to EKG	10	PTA
	EKG to Code STEMI	5	PTA
	Door to CS Activation		-1
	CS Page to Cath Team Arrival	30	NA*
	Total Time in ED	30	NA*
30 Mins CL			
	Departure ED to Setup Complete		NA*
	Departure ED to Procedure Start		NA*
	Depart ED to PCI	30	NA*
	Door to Balloon	60	NA*
	First Medical Contact to Balloon	90	NA*

**Code STEMI canceled. EKGs did not meet STEMI criteria.*

EMS EKG





Monitor Data Service Wide

- False calls – acceptable number or alarming increase?
- Proactive rather than REACTIVE
- Help gather the data if it's not there (12-leads or story pieces)

QUESTIONS?



David.Glendenning@nhrmc.org